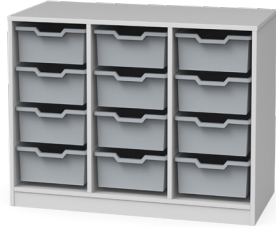

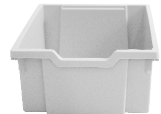


STORE FLEX



Recommended use	School, university, educational institutions, nursery school	
Design	STORE:	19 mm wood-based panel, melamine-coated, ABS edge 2 mm, radius R2, in white.
	Material boxes:	Polypropylene 2.4 mm wall thickness.
Features	STORE FIX:	Fixed
Material box colours	<input type="radio"/> Translucent <input type="radio"/> Light grey <input type="radio"/> Royal blue <input type="radio"/> Flame red <input type="radio"/> Sunshine yellow <input type="radio"/> Grass green	
Material box sizes W/D/H	 	
	Box 1 Internal dimensions W/D/H: 28 × 37 × 7.5 cm External dimensions W/D/H: 31.5 × 42.6 × 7.5 cm	Box 2 Internal dimensions W/D/H: 28 × 37 × 15 cm External dimensions W/D/H: 31.5 × 42.6 × 15 cm
Care instructions	For normal cleaning, use warm water with a mild detergent and a cotton cloth.	

STORE FLEX COLLECTIONS:



STORE FLEX 1
Dimensions W/D/H: 105 x 48 x 82 cm
Weight: 41.9 kg



STORE FLEX 3
Dimensions W/D/H: 105 x 48 x 82 cm
Weight: 43.8 kg



STORE FLEX 4
Dimensions W/D/H: 105 x 48 x 82 cm
Weight: 44.4 kg



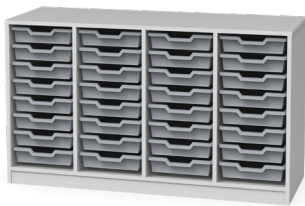
STORE FLEX 5
Dimensions W/D/H: 105 x 48 x 82 cm
Weight: 44.1 kg



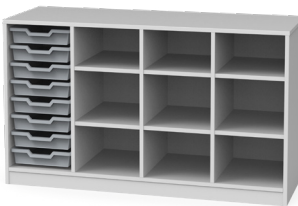
STORE FLEX 6
Dimensions W/D/H: 105 x 48 x 82 cm
Weight: 49.8 kg



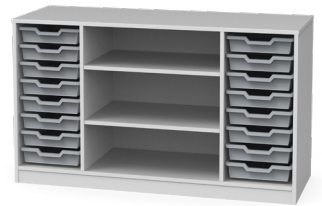
STORE FLEX 7
Dimensions W/D/H: 139.5 x 48 x 82 cm
Weight: 53.0 kg



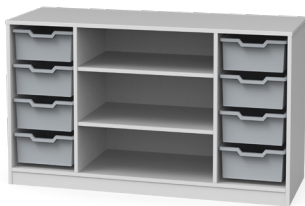
STORE FLEX 8
Dimensions W/D/H: 139.5 x 48 x 82 cm
Weight: 55.3 kg



STORE FLEX 9
Dimensions W/D/H: 139.5 x 48 x 82 cm
Weight: 62.1 kg



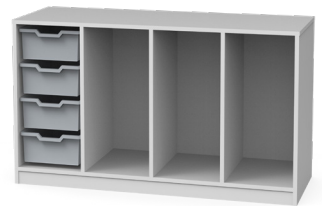
STORE FLEX 10
Dimensions W/D/H: 139.5 x 48 x 82 cm
Weight: 56.8 kg



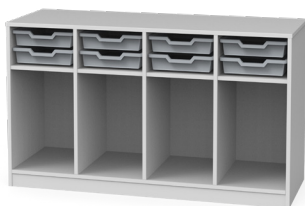
STORE FLEX 11
Dimensions W/D/H: 139.5 x 48 x 82 cm
Weight: 55.7 kg



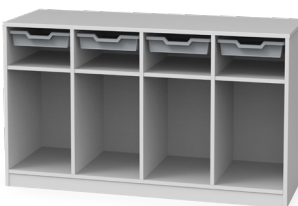
STORE FLEX 12
Dimensions W/D/H: 139.5 x 48 x 82 cm
Weight: 58.3 kg



STORE FLEX 13
Dimensions W/D/H: 139.5 x 48 x 82 cm
Weight: 51.1 kg



STORE FLEX 14
Dimensions W/D/H: 139.5 x 48 x 82 cm
Weight: 59.0 kg



STORE FLEX 15
Dimensions W/D/H: 139.5 x 48 x 82 cm
Weight: 58.3 kg



STORE FLEX 19
Dimensions W/D/H: 70.5 x 48 x 82 cm
Weight: 58.3 kg

GENERAL INFORMATION



Planning data

Files for architects and planners available on request.

Tender documents

Please send us an email or give us a call, and we will promptly send you the requested texts about our products.

Dimensions may vary due to material and production tolerances
Subject to technical changes, errors and colour variations.

NOTES

WE LOOK FORWARD TO SEEING YOU



FLÖTOTTO

	<p>Flötotto Einrichtungssysteme GmbH An der Manufaktur 4 33334 Gütersloh Germany</p>
Consultancy	<p>FLÖTOTTO is a key development partner for school authorities, architects, ministries and is in daily close contact with the teachers responsible in the respective schools. Together, we create flexible, age-appropriate educational spaces for intensive interaction between learners and teachers. The living and learning spaces we develop improve learning outcomes and, together with the architecture, ideally also have a positive impact on the immediate vicinity of the school location.</p> <p>We remain your first point of contact until the project is completed and even years afterwards.</p> <p>Get in touch with us, we will be happy to advise you!</p>
Contact for teachers & school administrators	<p>+ 49 5241 50474 0 lehrende@floetotto.com</p>
Contact for architectural firms	<p>+ 49 5241 50474 51 schulbau@floetotto.com</p>
Contact for school authorities	<p>+ 49 5241 50474 50 schultraeger@floetotto.com</p>
Contact for school authorities	<p>www.floetotto.com</p>
